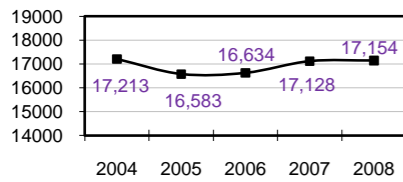


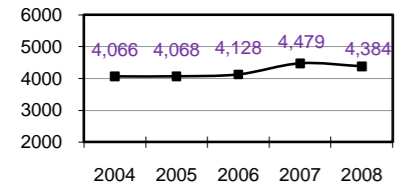
USU PERFORMANCE DASHBOARD - NOVEMBER 2009

STUDENTS

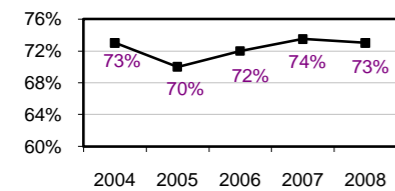
FTE Students: Total USU⁶



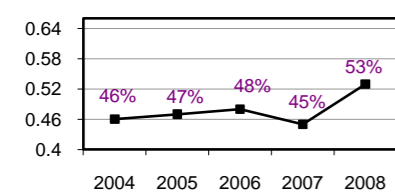
FTE Students: RCDE⁶



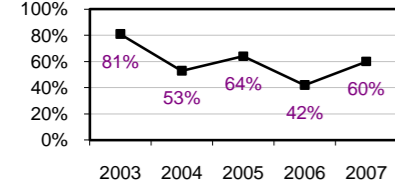
First-Year Retention Rate^{1,7}



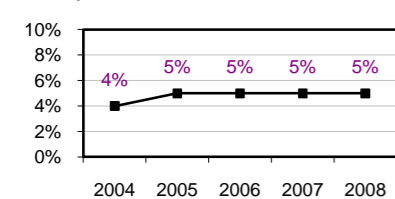
Six Year Graduation Rate: All Students^{1,7}



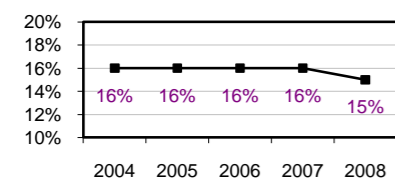
Graduation Rate: Student Athletes^{1,7}



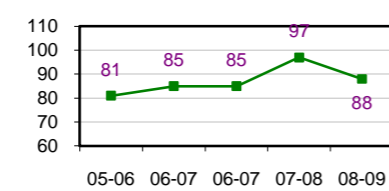
Minority Students: % of Total Enrolled⁶



Graduate Students: % of Total Enrolled⁶

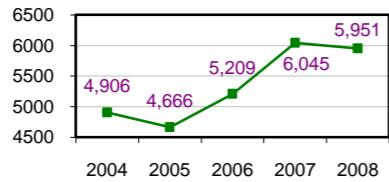


Doctorates Awarded

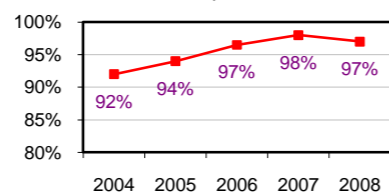


ADMISSIONS

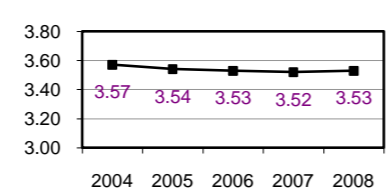
New Freshman Applicant Pool^{6,7}



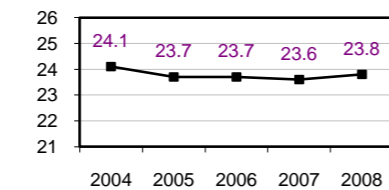
New Freshman Acceptance Rate^{6,7}



New Freshman GPA^{6,7}

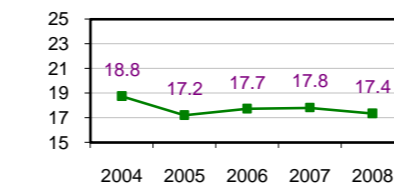


New Freshman Average ACT^{6,7}

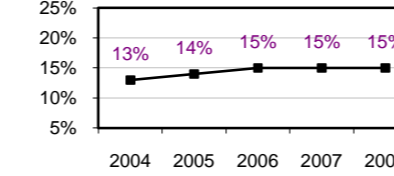


INSTRUCTION

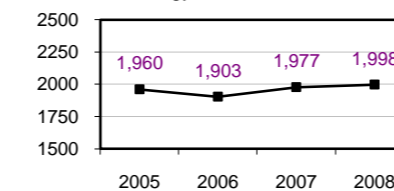
Student/Faculty Ratio^{6,7}



Classes with 50 Students or Greater^{6,7}

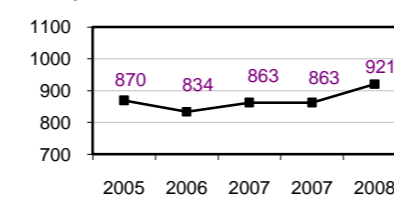


FTE in Technology Delivered CE Courses^{2,6}

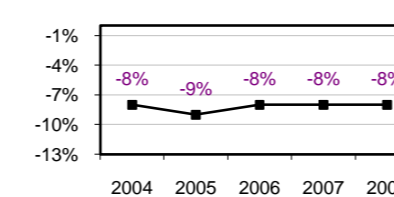


FACULTY (FULL-TIME)

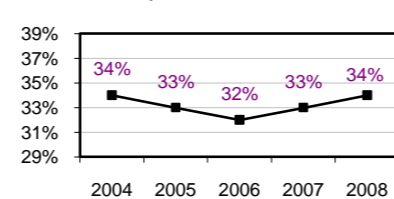
Faculty Headcount^{3,6}



Total Compensation Compared to Peers⁴



Female Faculty^{3,6}

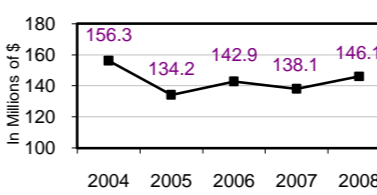


Minority Faculty^{3,6}

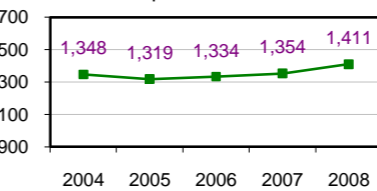


RESEARCH

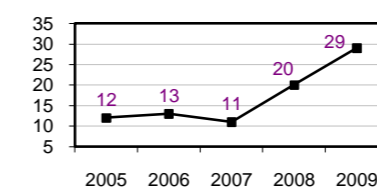
Total Research Expenditures



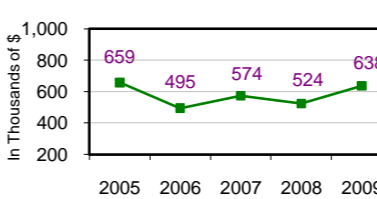
Research Proposals Submitted



Patents Filed

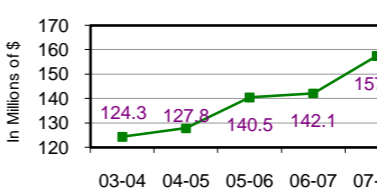


Gross License Income

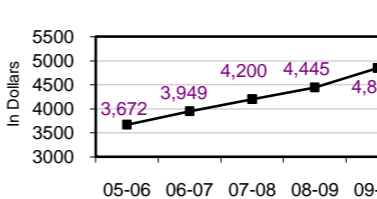


FINANCE

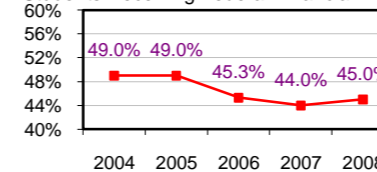
Total State Funds



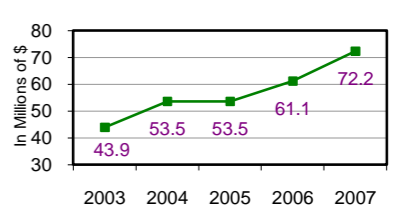
Tuition & Fees^{5,7,8}



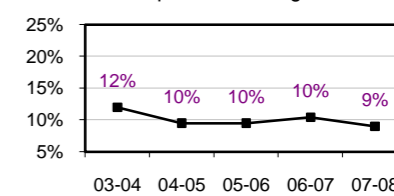
Students Receiving Federal Financial Aid



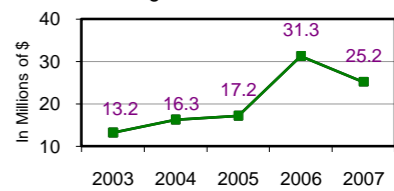
Endowment



Alumni Participation in Giving

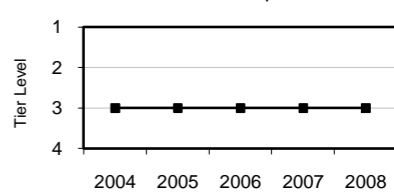


Private Giving



NATIONAL RANKING

U.S. News and World Report



NOTES:

- 1 Based on cohorts entering one year (retention rate) or six years (graduation rate) earlier.
- 2 RCDE courses only.
- 3 Department Heads included.
- 4 Salary plus benefits, average for all ranks; peers are Regent's USU Peer Group.
- 5 Full-time resident entering freshman.
- 6 Fall Semester of year reported.
- 7 Main Campus only.
- 8 Thirty credit hours.

TREND:

- ▲ higher
- ▼ lower
- no change
- green = better
- red = worse
- black = neutral

COMPARATIVE DATA NOVEMBER 2009

	USU	AVERAGE	USU REGENT'S PEER INSTITUTIONS										OTHER	
			COLO. STATE	IOWA STATE	NC STATE	NM STATE	ORE. STATE	PENN. STATE	TEXAS A&M	UC-DAVIS	VPI	WASH. STATE	BYU	U of U
STUDENTS⁴														
1st-Year Retention Rate (4-year avg. 2004-07) ¹	73%	86%	83%	85%	90%	73%	81%	94%	92%	90%	90%	84%	90%	81%
6-Year Graduation Rate (4-year avg. 1998-01) ¹	45%	69%	64%	66%	69%	44%	61%	84%	78%	79%	78%	63%	73%	56%
% Minority Students (Fall 2006)	5%	20%	12%	8%	16%	48%	14%	12%	18%	49%	14%	13%	9%	10%
% Graduate Students (Fall 2006)	12%	18%	20%	18%	23%	20%	15%	14%	18%	16%	21%	14%	10%	18%
Doctorates Awarded (2005-2006)	81	321	186	281	369	79	166	646	535	413	366	170	79	276
ADMISSIONS⁴														
New Freshman Acceptance Rate (Fall 2007)	73%	74%	86%	89%	60%	85%	86%	51%	76%	59%	67%	76%	74%	82%
New Freshman Yield (Fall 2006) Enrolled/Admitted	47%	43%	42%	46%	48%	46%	48%	35%	61%	24%	40%	40%	79%	43%
INSTRUCTION⁴														
Student/Faculty Ratio (Fall 2007)	17/1	18/1	17/1	16/1	16/1	19/1	18/1	17/1	20/1	19/1	16/1	14/1	21/1	14/1
% Classes with 1-19 Students (Fall 2007)	39%	35%	37%	35%	32%	51%	40%	33%	22%	35%	23%	40%	47%	41%
% Classes with >= 50 Students (Fall 2007)	15%	19%	17%	17%	16%	9%	20%	17%	23%	28%	22%	19%	10%	17%
FACULTY⁴														
Full-time														
Faculty Headcount (Fall 2006)	735	1,765	1,122	2,164	1,652	658	1,610	3,000	N/A	N/A	2,110	1,802	1,316	735
% Female Faculty (Fall 2006)	31%	35%	35%	35%	29%	38%	38%	33%	N/A	N/A	29%	40%	20%	35%
% Minority Faculty (Fall 2006)	6%	12%	9%	13%	13%	16%	10%	13%	N/A	N/A	13%	10%	4%	11%
Full-time Instructional														
Average Salary-In thousands (Fall 2008) ²														
Assistant Professor	62.9	69.3	69.3	71.5	71.6	55.3	67.5	72.4	72.2	75.9	70.4	67.2	N/A	71.6
Associate Professor	68.6	79.8	81.3	81.9	84.9	66.5	71.1	87.7	81.8	83.1	84.6	75.4	N/A	78.6
Professor	88.3	109.3	108.0	112.1	114.3	78.3	91.9	131.1	116.3	122.7	116.8	101.2	N/A	113.7
All Ranks	70.1	83.6	89.1	85.3	87.5	66.1	69.2	87.5	86.0	101.6	88.0	75.7	N/A	81.7
Average Total Compensation-In thousands (Fall 2008) ²														
Assistant Professor	87.6	89.1	86.2	93.9	89.9	70.9	94.7	89.9	86.3	103.6	92.2	83.8	N/A	95.8
Associate Professor	94.6	102.6	101.1	106.3	106.0	86.0	102.7	109.8	97.7	112.8	109.0	94.4	N/A	104.3
Professor	118.6	137.4	134.3	141.2	140.0	100.4	127.6	159.4	137.3	162.4	146.3	124.6	N/A	147.4
All Ranks	96.4	106.7	110.8	109.9	108.5	85.0	98.9	108.1	102.5	135.9	112.7	94.4	N/A	107.4
% of Instructional Faculty that are Full-Time (Fall 2007)	91%	93%	99%	94%	96%	89%	86%	96%	94%	94%	95%	88%	89%	86%
% Faculty with Terminal Degree (Fall 2006)	85%	85%	99%	88%	88%		65%	72%	89%	98%	79%			70%
FINANCE														
% of Alumni Who Give (2-year avg. 2005-06, 2006-07)	10%	16%	10%	16%	24%	7%	15%	22%	17%	13%	21%	18%	15%	9%
State Appropriations-In millions (FY 2006)	138.1	276.5		245.6	400.0	147.8	140.5		420.5	408.2	239.6	209.7	N/A	249.6
Undergraduate Resident Tuition & Fees-In dollars (2006-07)	3,949	6,536	4,717	5,860	4,783	4,230	5,643	12,164	6,966	7,576	6,973	6,447	3,620	4,642
Undergraduate Non-Resident Tuition & Fees-In dollars (2006-07)	11,449	18,027	16,245	16,354	16,981	13,803	17,559	22,712	15,216	26,260	19,049	16,087	3,620	14,572
Room and Board-In dollars (2006-07)	4,400	6,533	6,602	6,329	7,040	5,576		7,400	7,660		4,766	6,890		6,068
RESEARCH														
Total Research Expenditures-In millions (FY 2006)	139	291	254	222	331	169	190	644	N/A	N/A	322	196	26	248
Patent Applications (FY 2006)	13	55	31	33	128	24	22	106	N/A	N/A	47	45	51	92
Gross License Income-In millions (FY 2006)	0.49	1.8	1.07	7.21	0.00	0.11	1.88	1.35	N/A	N/A	1.93	0.72	3.07	16.30
NATIONAL RANKING														
U.S. News and World Reports (2007)	3rd Tier	2nd Tier	2nd Tier	2nd Tier	2nd Tier	4th Tier	3rd Tier	1st Tier	2nd Tier	1st Tier	2nd Tier	2nd Tier	2nd Tier	2nd Tier

NOTE 1: USU's numbers on the Comparative Data may be 1-2 years behind those reported on the Performance Dashboard because more recent comparative data for our peers are not available.

¹ Based on cohorts entering one year (retention rate) or six years (graduation rate) earlier.

² Total compensation is salary plus benefits, average for all ranks; peers are Regent's USU Peer Group.

³ Non-LDS student tuition & fees at BYU

⁴ Main Campus only